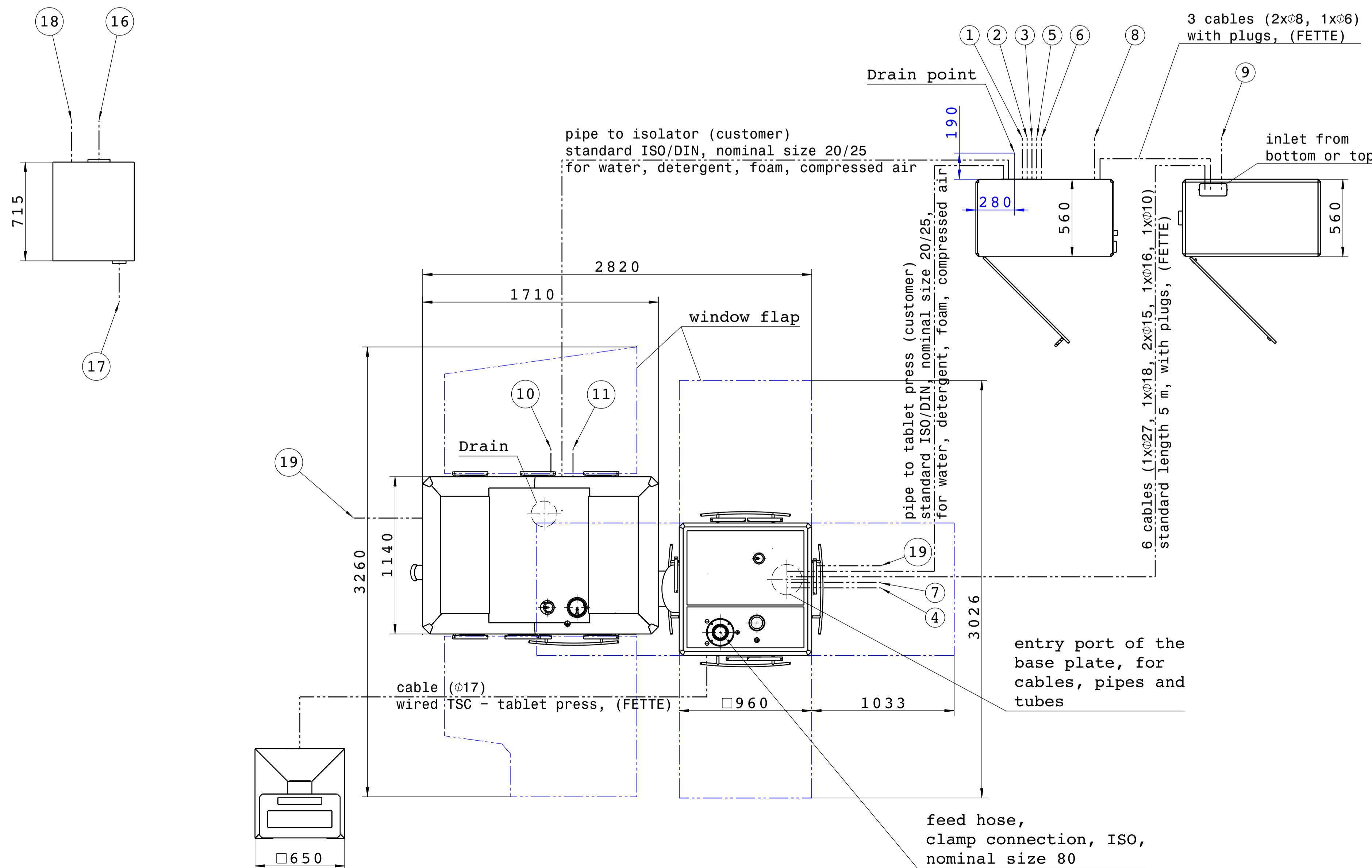


drying system terminal
wired/wireless isolator machine WiP-Center switch cabinet



no.	medium	condition	connection	note
1	cold water	max. temp. 40°C 2-8 bar 60-100 l/min	clamp DIN nominal size 25	input, customer
2	hot water	max. temp. 80°C 2-8 bar 60-100 l/min	clamp DIN nominal size 25	input, customer
3	purified water	max. temp. 80°C 2-8 bar 60-100 l/min	clamp DIN nominal size 25	input, customer
4	compressed air	6-10 bar min. 300 l/min	quick disconnect coupler nominal width 6	input, FETTE standard 8 m
5	compressed air	6-10 bar min. 450 l/min	quick disconnect coupler flexible tube Ø12	input, customer
6	drain	different	clamp DIN nominal size 25	output, customer
7	waste water	different	clamp DIN nominal size 50	output, customer
8	mains	3Ph + PE 400/480 V 50/60 Hz	cable fused 16 A	input, customer
9	mains	3Ph + PE 400/480 V 50/60 Hz	cable fused 32 A	input, customer
10	compressed air	6-10 bar min. 340 l/min	quick disconnect coupler nominal width 6	input, FETTE standard 8 m
11	waste water	different	clamp DIN nominal size 50	output, customer
16	dry air		hose Ø160	output, FETTE standard 5 m
17	wet air		hose Ø100	output, FETTE standard 5 m
18	mains	3Ph + PE 400/480 V 50/60 Hz	cable fused 16 A	input, customer
19	dry air		hose Ø160	input from drying system

foundation loading 24kN

